



The Element

— *by Anocha* —

Kamala - Phuket

•COMPUTER GENERATED IMAGE



LUXURY LIVING REDEFINED AT THE ELEMENT



The Element
— by Anocha —

PHUKET PLUS CO., LTD: PIONEERS IN LUXURY DEVELOPMENTS SINCE 2006

Founded by Mr. Manusanan Nararatwanchai in 2006, Phuket Plus Co., Ltd were the pioneers in developing and designing luxury condominiums and villas on Phuket's west coast, focusing on the prime districts of Kamala and Cherngtalay. With over 20 successful projects completed across Thailand, the company has built a strong reputation for excellence in real estate development.

This track record includes some of the most renowned developments including Oceana, Icon Park, Zen Space, The Trees Residence, Lake Town, Prime Pano, and Prime Villas. Phuket Plus continues to set the standard for luxury living on the island.

Anocha Property, led by Managing Director Mr. Anocha Paochinda, has successfully developed 6 major projects in Phuket, valued at over 1,400 million Baht. Specializing in condominiums, townhouses, and single houses, Anocha Property is a trusted Phuket-based brand that understands the true needs of homeowners.

*COMPUTER GENERATED IMAGE





The Element
— by Anocha —

ESCAPE TO QUIET ELEGANCE; BEACH, MOUNTAINS, COMMUNITY

Discover The Element, nestled in a prime and peaceful location in Kamala on Phuket's western coast. Here you will find stunning forested mountain views away from busy roads and yet just minutes from the beach, local shops and restaurants.

Kamala offers a perfect blend of natural beauty, tranquil living and modern comforts. Known for its pristine beach and stunning surrounding mountains, Kamala provides a lifestyle that is both relaxing and enriching.

Kamala Beach, with its soft white sand and crystal-clear waters is ideal for morning walks and exercise, sunbathing, or simply a swim to start your day. Beyond the beach you will feel at home in Kamala's vibrant, yet intimate community.

Surin, Laguna and Patong are all within easy reach and offer an abundance of complimentary activities.

But it's not just the location; it's the Lifestyle. The Element offers a select few the chance to enjoy premium amenities in a peaceful, secluded setting. With only 278 luxury units spread across four residential blocks, you'll experience privacy and exclusive facilities unlike any other.

The Element redefines what it means to experience luxury. Secure your own place in this tranquil paradise and join a select community that promises an elevated, active lifestyle.

COMPUTER GENERATED IMAGE





The Element

— *by Anocha* —

LUXURY LIVING REDEFINED

Welcome to The Element by Anocha, where the art of luxury living is redefined. Located just minutes from Kamala Beach, this exclusive community for the privileged few features 278 meticulously designed units set amidst a tranquil environment, offering breathtaking mountain views.

The Element introduces Kamala's most modern condo concept, with unit sizes ranging from stylish 29.87m² spaces to expansive 168.61m² penthouses complete with private pools all on over 12,240m² of prime natural land.

Exclusive to only a select few, the premium facilities are extraordinary and exciting. Enjoy double swimming pools set within lush, landscaped gardens that line each building, a state-of-the-art Muay Thai-themed gym, fitness centre, tennis court, sauna, business hub, marketplace shop with open plan kitchen facilities, a beauty salon with nail spa and more.

At The Element, experience the perfect blend of modern luxury and exclusive living within a community that offers unmatched amenities.



The Element

— by Anocha —

PROJECT INFORMATION

Total Land Size 5-2-45 Rai.
Total Units 278 Units
Location Kamala, Phuket
Project Type Low Rise Condominium
4 Buildings (7 Floors)

Unit Types

Type A : 1 Bedroom
Type B : 2 Bedroom
Type C : 1 Bedroom with Private Pool
Type D : 2 Bedroom with Private Pool
Type E : Master Penthouse with Private Pool

Facilities

Pool, Anocha Muay-Thai Style Gym, Fitness Center, Tennis Court, Yoga, Cafe', Co-Kitchen space, Market Place, Kids Playground, Sauna Room, Beauty Salon and Nails Spa, Business Hub, Lobby and CCTV 24 Hours





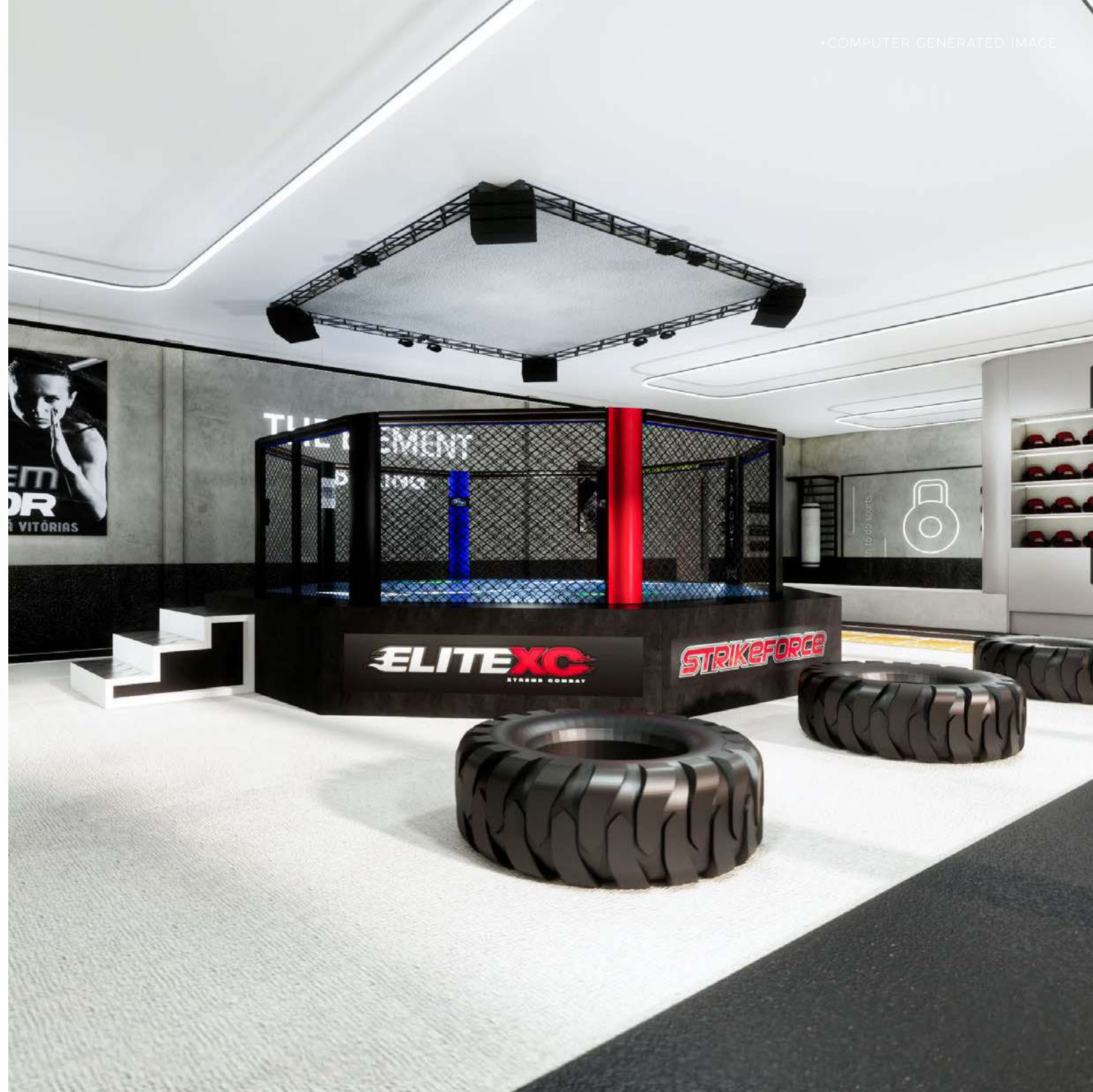




FACILITIES

- Leisure pool
- Anocha Muay Thai & Boxing Gym
- Fitness Center
- Yoga
- Tennis Court
- Cafe'
- Co-Kitchen space
- Market Place
- Kids Playground
- Sauna Room
- Beauty Salon & Nails Spa
- Business Hub
- Lobby
- CCTV 24 Hours


The Element
— by Anocha —



*COMPUTER GENERATED IMAGE



MORE THAN A WORKOUT, ITS A LIFESTYLE

*COMPUTER GENERATED IMAGE



LUXURY LIVING WITH WELLNESS AND BEAUTY JUST STEPS AWAY



BALANCE LIFE AND WORK WITH EASE

*COMPUTER GENERATED IMAGE



1st FLOOR PLAN

MASTER PLAN



UNIT TYPE

TYPE A : 1 BEDROOM

- 29.87 ● 31.24 ● 46.10 ● 48.78 ● 50.09 ● 52.95

TYPE B : 2 BEDROOM

- 49.83 ● 57.25

TYPE C : 1 BEDROOM WITH PRIVATE POOL

- 74.15 ● 92.61

TYPE D : 2 BEDROOM WITH PRIVATE POOL

- 124.74

TYPE E : MASTER PENTHOUSE WITH PRIVATE POOL

- 168.61

2nd FLOOR PLAN



UNIT TYPE

TYPE A : 1 BEDROOM

- 29.87 ● 31.24 ● 46.10 ● 48.78 ● 50.09 ● 52.95

TYPE B : 2 BEDROOM

- 49.83 ● 57.25

TYPE C : 1 BEDROOM WITH PRIVATE POOL

- 74.15 ● 92.61

TYPE D : 2 BEDROOM WITH PRIVATE POOL

- 124.74

TYPE E : MASTER PENTHOUSE WITH PRIVATE POOL

- 168.61

3rd FLOOR PLAN



UNIT TYPE

TYPE A : 1 BEDROOM

- 29.87 ● 31.24 ● 46.10 ● 48.78 ● 50.09 ● 52.95

TYPE B : 2 BEDROOM

- 49.83 ● 57.25

TYPE C : 1 BEDROOM WITH PRIVATE POOL

- 74.15 ● 92.61

TYPE D : 2 BEDROOM WITH PRIVATE POOL

- 124.74

TYPE E : MASTER PENTHOUSE WITH PRIVATE POOL

- 168.61

4th FLOOR PLAN



UNIT TYPE

TYPE A : 1 BEDROOM

- 29.87 ● 31.24 ● 46.10 ● 48.78 ● 50.09 ● 52.95

TYPE B : 2 BEDROOM

- 49.83 ● 57.25

TYPE C : 1 BEDROOM WITH PRIVATE POOL

- 74.15 ● 92.61

TYPE D : 2 BEDROOM WITH PRIVATE POOL

- 124.74

TYPE E : MASTER PENTHOUSE WITH PRIVATE POOL

- 168.61

5th FLOOR PLAN



UNIT TYPE

TYPE A : 1 BEDROOM

- 29.87 ● 31.24 ● 46.10 ● 48.78 ● 50.09 ● 52.95

TYPE B : 2 BEDROOM

- 49.83 ● 57.25

TYPE C : 1 BEDROOM WITH PRIVATE POOL

- 74.15 ● 92.61

TYPE D : 2 BEDROOM WITH PRIVATE POOL

- 124.74

TYPE E : MASTER PENTHOUSE WITH PRIVATE POOL

- 168.61

6th FLOOR PLAN



UNIT TYPE

TYPE A : 1 BEDROOM

- 29.87 ● 31.24 ● 46.10 ● 48.78 ● 50.09 ● 52.95

TYPE B : 2 BEDROOM

- 49.83 ● 57.25

TYPE C : 1 BEDROOM WITH PRIVATE POOL

- 74.15 ● 92.61

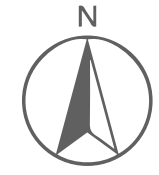
TYPE D : 2 BEDROOM WITH PRIVATE POOL

- 124.74

TYPE E : MASTER PENTHOUSE WITH PRIVATE POOL

- 168.61

7th FLOOR PLAN



UNIT TYPE

TYPE A : 1 BEDROOM

- 29.87
- 31.24
- 46.10
- 48.78
- 50.09
- 52.95

TYPE B : 2 BEDROOM

- 49.83
- 57.25

TYPE C : 1 BEDROOM WITH PRIVATE POOL

- 74.15
- 92.61

TYPE D : 2 BEDROOM WITH PRIVATE POOL

- 124.74

TYPE E : MASTER PENTHOUSE WITH PRIVATE POOL

- 168.61

*COMPUTER GENERATED IMAGE



TYPE A

1 Bedroom

BEDROOM	11.02	SQ.M.
BATHROOM	3.92	SQ.M.
KITCHEN - LIVING	10.79	SQ.M.
TERRACE	4.14	SQ.M.

TOTAL AREA 29.87 SQ.M.

*Area is approximate and may vary



TYPE B

2 Bedroom

BEDROOM 1	12.03	SQ.M.
BATHROOM 1	3.83	SQ.M.
BEDROOM 2	8.43	SQ.M.
BATHROOM 2	3.17	SQ.M.
KITCHEN - LIVING	16.78	SQ.M.
TERRACE	5.59	SQ.M.

TOTAL AREA 49.83 SQ.M.

*Area is approximate and may vary

*COMPUTER GENERATED IMAGE



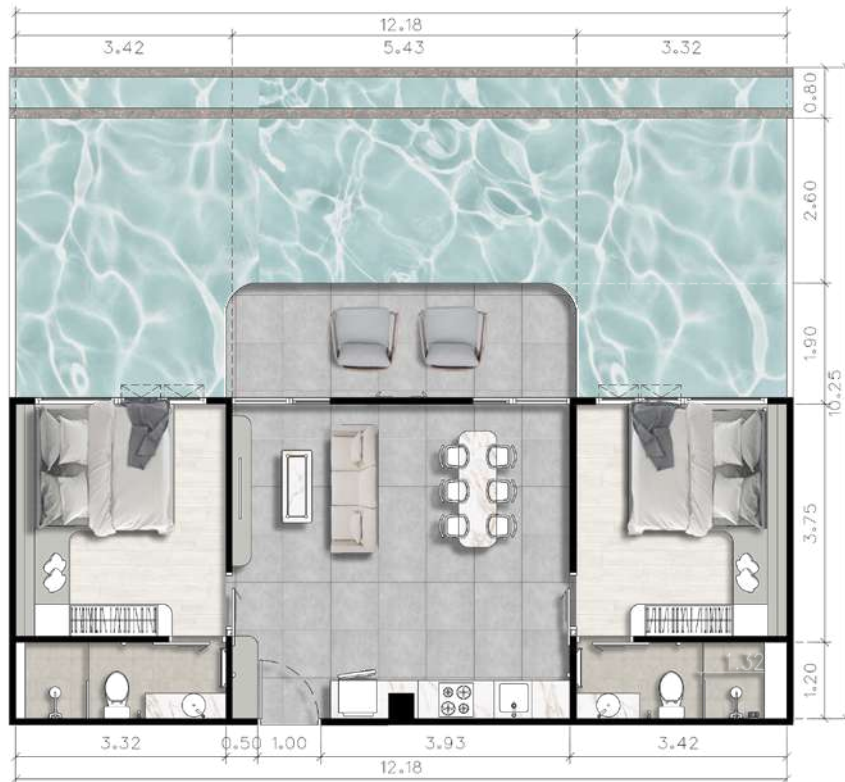
TYPE C

1 Bedroom with Private Pool

BEDROOM	11.77	SQ.M.
BATHROOM	4.53	SQ.M.
KITCHEN - LIVING	27.25	SQ.M.
TERRACE	14.00	SQ.M.
POOL	16.60	SQ.M.

TOTAL AREA 74.15 SQ.M.

*Area is approximate and may vary



TYPE D

2 Bedroom with Private Pool

BEDROOM 1	12.21	SQ.M.
BATHROOM 1	3.95	SQ.M.
BEDROOM 2	12.21	SQ.M.
BATHROOM 2	3.98	SQ.M.
KITCHEN - LIVING	37.95	SQ.M.
TERRACE	54.44	SQ.M.
TOTAL AREA	124.74	SQ.M.

*Area is approximate and may vary

*COMPUTER GENERATED IMAGE



TYPE E

Master Penthouse with Private Pool

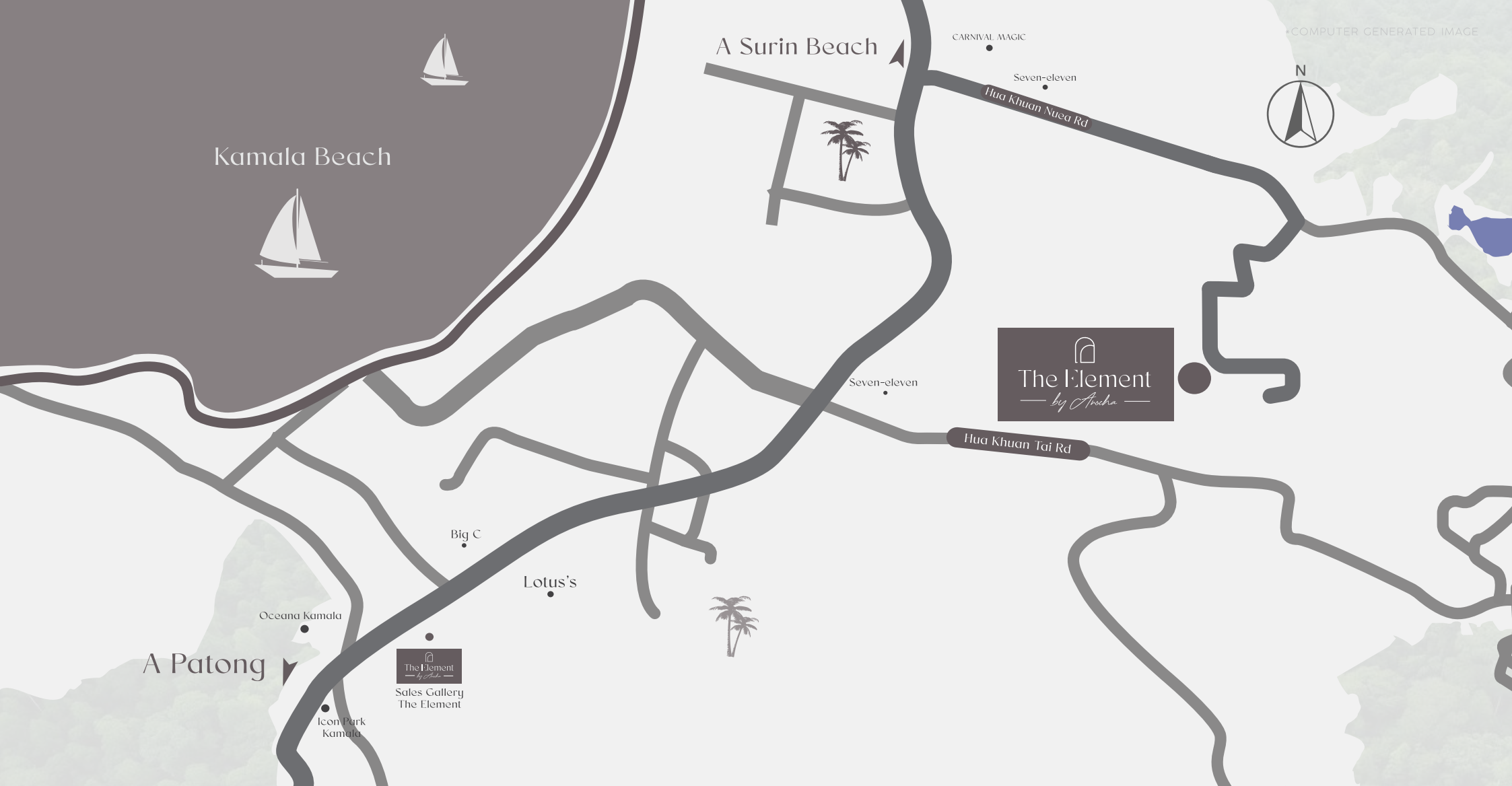
BEDROOM 1	10.68	SQ.M.
BATHROOM 1	4.86	SQ.M.
WALK IN CLOSET 1	7.80	SQ.M.
BEDROOM 2	11.84	SQ.M.
BATHROOM 2	5.58	SQ.M.
WALK IN CLOSET 2	9.43	SQ.M.
KITCHEN - LIVING	73.35	SQ.M.
WINE ROOM	5.58	SQ.M.
TERRACE	24.20	SQ.M.
SWIMMING POOL	15.29	SQ.M.

TOTAL AREA 168.61 SQ.M.

*Area is approximate and may vary



MASTER PENTHOUSE



DEPARTMENT STORES & LIFESTYLE SHOPPING MALL

Villa Market Kamala	5 min
Big C Kamala	6 min
Porto De Phuket	17 min
Boat Avenue	17 min
Central Patong	20 min
Jungeylon Patong	20 min
Central Phuket	30 min

BEACHES

Kamala Beach	5 min
Surin Beach	8 min
Patong Beach	18 min
Bang Tao Beach	21 min
Lagan Beach	30 min

LEISURE & LIFESTYLE

Cafe Del Mar	4 min
Carnival Magic	4 min
Kayadee Wellness	5 min
Catch Beach Club	14 min
Laguna Golf Course	23 min
Royal Phuket Marina	33 min
Phuket International Airport	42 min
Ao Po Grand Marina	45 min

INTERNATIONAL SCHOOL

Headstart International School	21 min
Finnway International School	30 min
British International School	35 min
UWC Thailand International School	40 min
Buds International School	45 min

HOSPITALS

Patong Hospital	21 min
Vachira Phuket Hospital	30 min
Thalang Hospital	35 min
Bangkok Hospital	40 min
Bumrungrad International Hospital (Up Coming)	45 min

*COMPUTER GENERATED IMAGE



บริษัท อโนชา พร็อพเพอร์ตี้ จำกัด บริษัทมหาชนไทย ภายใต้ตรา บริษัท
 กรรมการผู้จัดการ ที่มากด้วยประสบการณ์ไม่น้อยกว่า 10 ปี โดยคำนึงถึง
 ผลงานที่ผ่านมา ถึง 6 โครงการ 1. หมู่บ้านอโนชาวิลเลจ 2. หมู่บ้านอโนชาพูลวิลล่า
 3. หมู่บ้านพิทักษ์โฮม(1) 4. หมู่บ้านพิทักษ์โฮม(2) 5. หมู่บ้านพิทักษ์โฮม(3)
 6. หมู่บ้านมาราเวลกรีนและ อิมมูบ้านในเมือง กอบโกยและคุ้มครองผู้บริโภคด้วย
 อโนชา พร็อพเพอร์ตี้ ซื่อสัตย์และให้ความสำคัญแก่ลูกค้าและผู้รับชมทุก
 เพราะ "บ้าน" เป็นสิ่งสำคัญ เป็นรากฐานของชีวิตของคนที่ดำรงชีพมาซึ่ง
 ที่นถาวรและสำคัญของคุณ ซึ่งเป็นอรรถกถารุคพิภพที่เวลาผ่านไป
 ที่จะต้องเป็นรางวัลให้แก่วิต จึงจำเป็นต้องมีสิ่งที่ดีที่สุดในทุก
 "บริษัท อโนชา พร็อพเพอร์ตี้ จำกัด เป็นบริษัทที่มีผู้บ้านที่เคารพและให้ความสำคัญ
 ครอบครอง"

7 โครงการ
 ในจังหวัดภูเก็ต
 มูลค่ากว่า
1,400
 ล้านบาท

DEVELOPER



The Element — by Anocha —

ANOCHA PROJECTS

- Pitak Home 1 Village - Completed
- Pitak Home 2 Village - Completed
- Pitak Home 3 Village - Completed
- Anocha Village - Completed
- Anocha Pool Villas - Completed
- Naravel Green - Completed
- The Cust Condominium - Completed

**7 PROJECTS
 IN PHUKET
 VALUE
 1,400
 MB.**

